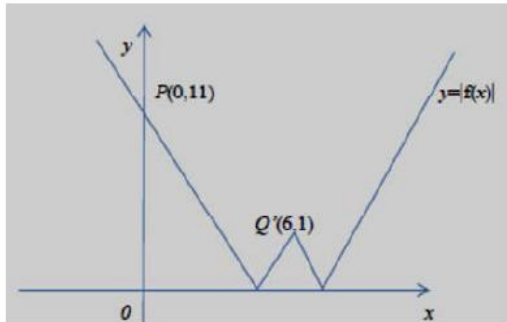


Daily Question

Day 6 Pure Mathematics – Mark Scheme

Question 1

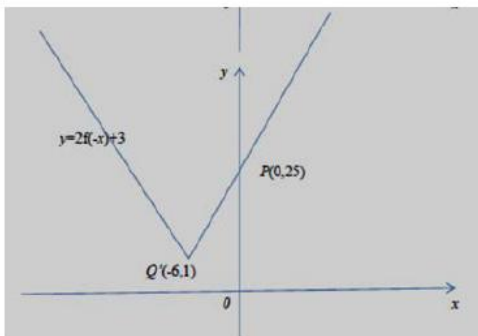
(a)



'W' Shape B1
(0, 11) and (6, 1) B1

(2)

b)



'V' shape B1
(-6,1) B1
(0,25) B1

(3)

c)

One of $a = 2$ or $b = 6$

$a = 2$ and $b = 6$

B1

B1

(2)

(7 marks)

Question 2

5(a)

Either $k > 13$ or $k = 3$
Both $k > 13$ $k = 3$

B1

B1

(2)

(b)

Smaller solution: $2(5-x)+3 = \frac{1}{2}x+10 \Rightarrow x = \frac{6}{5}$

Larger solution: $-2(5-x)+3 = \frac{1}{2}x+10 \Rightarrow x = \frac{34}{3}$

M1 A1

M1 A1

(4)

(c)

(6,12)

B1B1

(2)

(8 marks)

